



PO Box 14001  
Salem, OR 97309-5014

NONPROFIT  
ORGANIZATION  
U.S. POSTAGE  
PAID  
SALEM OR  
PERMIT NO. 67

# HEALTH CARE Philanthropy in *ACTION*

## Stepping up for our communities

There haven't been many silver linings to the COVID-19 crisis. But here is a big one: Pandemic response created closer partnerships across the local health system. These relationships opened new pathways for the Foundations to help people in need.

Over the past year, Salem Health Foundations, Salem Health frontline staff and regional health agencies have worked side-by-side to respond to the COVID-19 crisis. The Foundations:

- Were a leading supporter of Salem Health and county health agencies opening the first mass vaccination clinics in Oregon.
- Helped create a new Salem Health resiliency program to help hospital staff through these unprecedented times.

- Combined efforts with community partners to bring accurate, culturally appropriate COVID-19 information to historically marginalized communities and people experiencing homelessness.

Our relationships with these community partners will flourish long after COVID-19 abates and lead to collaborative community health improvement projects for years to come.

We are grateful to each of you who has made a difference by giving to the Foundations. Supporting the Foundations directly impacts the overall health and future well-being of our region. We thank you for your generous gifts.

**For more information or to arrange a gift, call the Salem Health Foundations at 503-814-1990**

**Donate online at [salemhealthfoundation.org](https://salemhealthfoundation.org)**

2021 Annual Report





# Message from our chief development officer

This annual report is intended to recognize **your** importance. Salem Health Foundations puts health care philanthropy into action in every corner of every community in Marion and Polk counties.

Of note, in 2021, we launched the “Families Matter Project.” This project intends to improve the emergency department at Salem Health. You will see this unfold in more detail throughout 2022.

Also, we took our responsibility seriously to find partners and collaborators that enable us to respond more effectively to people who are struggling through this public health emergency. The collaborative work accomplished in 2021 was extraordinary, and the impact, remarkable!

Salem Health and the Salem Health Foundations collaborated to respond to COVID throughout 2021. The foundations were a leading supporter of Salem Health and county health agencies enacting mass vaccination clinics. Additionally, the foundation boards helped support Salem Health staff resiliency. Participating and leading in this pandemic response work resulted in developing new powerful, productive partnerships. These evergreen relationships — like our connection to Salem Health — enable us to find and reach new pathways for hearing about people in need. After COVID-19 abates, we will leverage these to enact programs for future community health improvement.

Two principles guided our community health response

initiatives: 1) Bring support and resources to address need; and 2) Practice consistency and patience to make our work worthwhile. A review of the foundations’ work portfolios reveals these principles were effective. Our new partners illuminated the complexity of ever-changing health needs, and they helped us better understand the genuine need in education, communication, and supporting health services. Your financial support allowed us to quickly and consistently respond to these demonstrated needs.

We are more thankful than ever for the partnership of your financial and personal support. Your dedication to our shared work does and will continue to improve health and livability throughout the mid-Willamette Valley. Please accept our heartfelt thanks for your generosity!



A stylized, handwritten signature in black ink.

**Jim Bauer**  
Chief development officer

## TABLE OF CONTENTS

Focus on patient assistance ..... 3

Scholarships continue despite COVID challenges ..... 5

Community Health Philanthropy Awards recognize key Polk County partners..... 6

Early pandemic outreach key to serving low income families ..... 8

Illuminating the impact of the opioid crisis..... 11

A tradition of service: An interview with Alex Casebeer..... 14

Thank you to our donors .....17

Scholarships keep local care strong .....19

Upgraded medical technology ..... 20

Change of plans doesn’t stop Pink Out.....21

Making FETCH happen: Caring for hospitalized patients’ pets.....22

Offering care to our providers .....25

A healthy future in Polk County .....26



# Focus on patient assistance

Helping people is the mission of the Salem Health Foundations grant. We direct donor resources to critical needs identified through our connections with our network of health care providers and community organizations. These partners act as our eyes and ears to community health-related issues and alert us to where we can make the most difference. The foundation-funded childhood vaccination clinics — that serve hundreds of children across Marion and Polk counties — is an example of how our direct involvement improves community health. Our help can be given one patient at a time, aiding those highly vulnerable and in need, through initiatives like our Patient Assistance Program.

Over the past fiscal year, 80 Salem Health nurses in units across the organization specifically identified individuals in their care experiencing extreme hardship. They reached out to the foundations and asked for help in the form of co-payments, medication assistance, aid with necessary medical equipment and gas, and grocery support for those having difficulty making ends meet due to job losses due to a health crisis.

A Salem Cancer Institute nurse navigator wrote in a recent support request, “My patient requires radiation and chemotherapy. Additionally, he and his wife lost their home due to last fall’s wildfires and are staying in motels, so finances are tight. They need assistance to get by.”



My patient is homeless...she cannot afford her prescription, and her life depends on this medication.

Another nurse shared, “My patient is homeless and lives in her car with her adult son. She is on disability, but her income has been spent fixing her car and paying for motel stays. She cannot afford her prescription, and her life depends on this medication.”

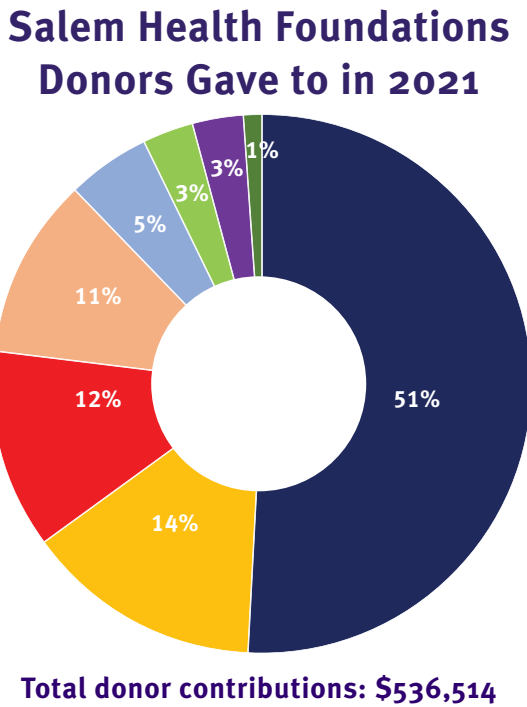
These heartbreaking stories are just a few of the many requests for help the foundations

grants with the Patient Assistance Fund. This assistance is acknowledged in significant ways by those receiving the support.

One family recently send a handmade card to the foundation offices with a note that read, “Thank you so very much for the very generous gas cards. It is immensely helpful and appreciated.”

The gas cards enabled the patient to continue to come to the hospital for lifesaving treatment, placing them on the road to recovery.

Support to the Patient Assistance Fund is from generous donors designating their gifts to help others in need. Donors directed just over \$20,000 to general patient assistance and over \$61,000 for patients undergoing treatment for cancer.



## Scholarships continue despite COVID challenges

### Scholarships keep local care strong

Since 1986, Salem Health Foundations has given away nearly \$3.5 million in annual scholarships. The foundations believe that by investing in future health care workers through scholarship opportunities, we will ensure our community has continued access to quality health care and experienced medical professionals. This commitment was demonstrated this past fiscal year by awarding \$100,000 in scholarships to 109 students. These students from across the Willamette Valley pursue degrees in various medical fields, including nursing, medical technology, physical therapy and health administration.

A repeat scholarship recipient shared, “I am pleased to let you know that I have completed my BSN program. I am beyond grateful for the scholarships I have received from the foundation. I am even entertaining the idea of pursuing my masters in nursing after a break with my family.”

Donors who support the Salem Health Foundations scholarship funds truly make a difference. A quality education gives students the tools they need to champion community health. At the same time, the awarded scholarships provide students with a bit of encouragement and a hand up of support to continue their studies.

“

**The foundation scholarship enabled me to pursue an opportunity to become a Registered Nurse First Assist (RNFA) in surgery, which is an expanded nursing role that requires specialized training and certification. It is my pleasure and honor to work alongside surgeons at West Valley and provide the advanced RNFA services locally to our patients.**



Mandy G., RNFA, West Valley Hospital

## Community Health Philanthropy Awards recognize key Polk County partners

The West Valley Foundation board of directors identified three groups who demonstrated selfless care to our community and selected them for special recognition in the form of Community Health Philanthropy Awards. Western Oregon University, St. Patrick's Catholic Church in Independence and students at Dallas High School were our three honorees.

**Western Oregon University** received the 2021 Community Leader Award for their extraordinary help to the area community by hosting the mass vaccination clinic in partnership with Salem Health and Polk County.

Western Oregon University interim president Dr. Jay Kenton and assistant vice president of campus public safety Rebecca Chiles receive their award from West Valley Foundation chair Darin Silbernagel and Salem Health Foundations chief development officer Jim Bauer.





# Community Health Philanthropy Awards recognize key Polk County partners

**St. Patrick’s Catholic Church** was awarded the 2021 Community Spirit Award for their efforts to assist and support residents in need. Each week, their parish members committed to delivering food baskets to their vulnerable and food-insecure neighbors. They offered COVID-19 testing, facilitated COVID-19 vaccinations and coordinated flu shots.

Saint Patrick’s priest Rev. Francisco S. Bringuela Jr. with West Valley Foundation chair Darin Silbernagel and Salem Health Foundations chief development officer Jim Bauer.



The students from **Dallas High School** received the 2021 Community Altruism Award in recognition of their extraordinary fundraising efforts to raise money for women’s cancer services. Their efforts have provided critical access to women’s health services for underrepresented and vulnerable community members.

Dallas High School Volleyball team



# Early pandemic outreach key to serving low-income families

Foundations partner with PacificSource Community Solutions for COVID-19 response

Early in the pandemic, the Salem Health Foundations believed they could be more effective if they improved community outreach to increase support for low income, Spanish-speaking, Pacific Islander, immigrant and other underrepresented communities in Marion and Polk Counties. A significant beginning of that strategy came through our partnership with PacificSource Community Solutions. Here is our interview with Josie Silverman Méndez, who serves as PacificSource’s Director of the Marion-Polk Coordinated Care Organization. As our region’s CCO, they are responsible for coordinating health care (physical, behavioral and dental) for people on the Oregon Health Plan.

**Josie, tell us a bit about the populations you work with.**

PacificSource Community Solutions’ members are primarily served through Medicaid, also known as the Oregon Health Plan or OHP. Many of our members are low income and come from historically marginalized and underserved communities. As a result, they face significant barriers to receiving equitable, high-quality health care. As of December 2021, just under 130,000 members are enrolled in the Marion-Polk CCO, which represents roughly 1 in 4 residents of Marion County and Polk County.

**So you saw some opportunity when the prospect of working with the Salem Health Foundations came about?**

It was easy to see that we shared mission emphasis and that the community could greatly benefit by us working

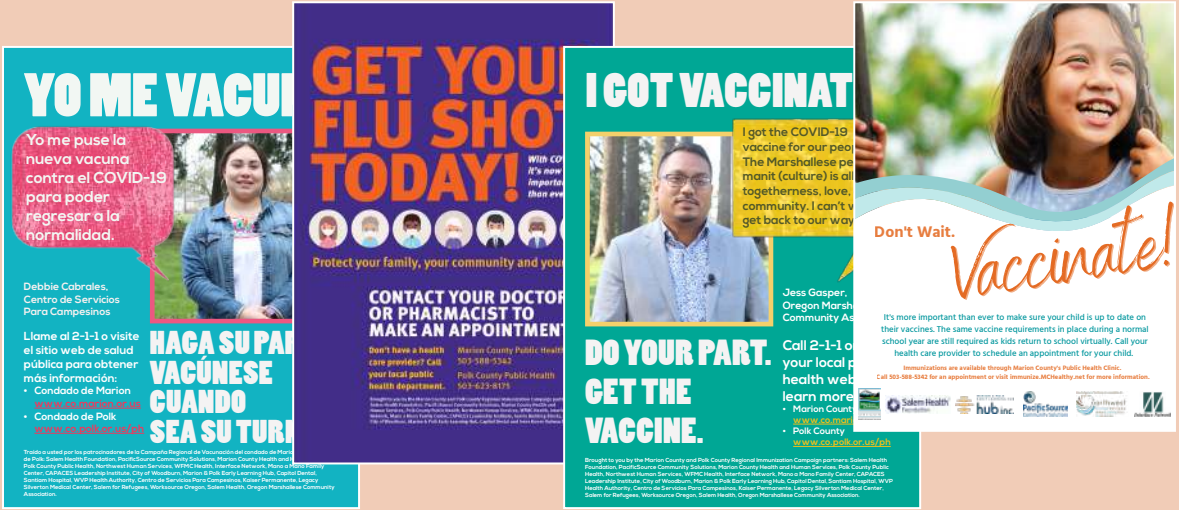


Josie Silverman Méndez  
Director of the Marion-Polk Coordinated Care  
PacificSource



Continuation from previous page

Foundation Partnership with PacificSource



The Salem Health Foundation is grateful for this ongoing relationship with PacificSource Community Solutions and the impact of this collaboration in advancing the Foundation’s community health-focused mission. The Foundation looks forward to combining efforts and resources to improve access to healthcare for everyone in our community.

together to support COVID-19 response efforts. Both of our organizations are deeply committed to supporting initiatives that advance overall community health and well-being and address health inequities, which the COVID-19 pandemic has done a lot to shine light on. Salem Health Foundations has a unique vantage point of being connected to Salem Health Hospitals and Clinics, a major provider partner of ours in the Marion-Polk region.

**What was the most apparent benefit to Marion and Polk County residents?**

By closely partnering over the course of the pandemic, we’ve both gained an opportunity to identify community needs and pool our shared resources to offer immediate support. Salem Health Foundations has the best access to Salem Health Hospitals and Clinics, so coming together brought new connectedness and better collaboration to get resources to the right people at the right time.

**What specific work made a real difference that most people wouldn’t see?**

PacificSource provided funding through the foundations for Salem Health Hospitals and Clinics to increase access

to COVID-19 testing and treatment within the Marion-Polk region. This resulted in a significant improvement in local testing resources through the purchase two new testing machines, as well as an increase in test reading capacity through the addition of staff. The community has and will continue to greatly benefit from this joint effort.

**Tell us more about other interesting programs resulting from the partnership?**

Also early on in the pandemic, we supported ARCHES hotel program. This program provided safe shelter in area hotels for houseless neighbors who received a positive test result and/or were high risk with underlying health conditions and needed a place to self-isolate and recuperate. We also supported several drive-thru COVID-19 testing events, including many focused on reaching underserved communities in north Marion County and the city of Woodburn. We partnered with Marion County Public Health, Alluvium Mobile Health Team, Interface Network, Salem Health Medical Clinic – Woodburn, and the City of Woodburn. One event hosted last August at Centennial Park provided free testing access for over 300 Spanish-speaking community members.

**Tell us more about that.**

Salem Health Foundations and PacificSource established and funded a regional immunization campaign that brought dozens of local community partners together to advise on the development of culturally and linguistically responsive outreach and education materials. Materials were made available in Spanish, Russian, Ukrainian, Chuukese, Marshallese, Mixteco, Mam and Somali. Partners used campaign materials to encourage individuals and families to protect themselves and the ones they love by getting the COVID-19 vaccine. Also, materials were developed and used to educate families about the importance of keeping up with their children’s regular immunizations and getting annual flu shots.

**Why was that important?**

It takes deep, authentic partnership and allocated resources to provide genuine support to vulnerable and culturally and linguistically diverse communities. To make this work, we needed to leverage our partnerships to advance our shared community health priorities. For example, we partnered with Interface Network to

develop and place COVID-19 immunization ads on Spanish-language television and radio stations, and we funded childhood immunization clinics, partnering with Childhood Health Associates of Salem, Marion & Polk Early Learning Hub, WFMC Health, and WVP Health Authority. We also partnered with Union Gospel Mission to support their ability to offer their guests access to equipment in order to facilitate telehealth appointments.

**Are there other areas where you see good work happening in the area because of partnerships with Salem Health Foundations?**

Yes, there was important partnership with Salem Free Clinic and Saint Francis Family Housing. The Salem Free Clinic purchased dental supplies and equipment to provide preventive dental care to uninsured clients, and Saint Francis Family Housing used their grant to expand the organization’s Wi-Fi infrastructure, improving opportunities for families to learn, stay healthy and access the vital services they need. These projects really made a difference to the individuals in these communities.

# Focusing on community health

## Illuminating the impact of the opioid crisis

Salem Health has moved from a single hospital into a mid-Willamette Valley medical service provider that offers two hospitals and multiple area clinics. This development improved and changed the foundation's mission. The change called on us to support improvements that address and improve the health outcomes of all the residents of the mid-Willamette Valley.

Bringing attention to the effect of critical health challenges that our society is facing is one way the foundation impacts our community's health. The Salem Health Foundation is grateful to partner with Dr. Paul Coelho, a leading national expert on opioid addiction. We support his work as he and other providers, practitioners, and researchers seek best practices for addressing the opioid health crisis and improving care outcomes for addiction.

The Foundations have recently received a generous grant from the High Intensity Drug Trafficking Areas (HIDTA) program and are continuing to receive a grant from the State of Oregon. We use these grants for collaboration with the Salem Health Pain Clinic and Dr. Paul Coelho. These foundation grant resources will better illuminate the pathways and effects of chronic addiction drug use and find information that we hope will improve effectiveness when addressing these patients. Here is an interview with Dr. Coelho.



**Dr. Paul Coelho**  
Salem Health Pain Clinic



## Despite the reductions in opioid prescribing starting in 2012, the US still prescribes more opioids than any other industrialized nation.

**Dr. Coelho, thank you for your work with the Salem Health Foundations. Tell us about pain management as a field?**

The year I started residency, it was the same year Oxycontin was FDA approved for pain. It was a big deal. As a leader of the Salem Health Pain Clinic, I encourage patients to holistically manage their pain without medications. Most experts agree that chronic pain is best managed through an

interdisciplinary approach: with behavioral health, physical and exercise therapy at the bow, and the work of doctors and nurses and medications at the stern.

**Tell us about how your work is impacted by opioids?**

My credo is safety and health first. Even when prescribed properly, opioids are a highly addictive drug. Opioids should be the last resort. According to the National Institute on Drug Abuse, roughly 21 to 29 percent of patients properly prescribed opioids for chronic pain misuse them. Despite the reductions in opioid prescribing starting in 2012, the US still prescribes more opioids than any other industrialized nation.

**Has the Salem Health Foundation been useful to your work?**

A resounding yes! In 2016, the mid-Willamette Valley was one of the highest opioid prescribing regions in Oregon. I received a Salem Health Foundation grant and used it to provide educational resources and create materials to encourage area physician prescribers to reduce dosage amounts and prescribed days of use for opioids. Through collaboration with our prescribing community we have corrected course.

**What are some of your worries from the perspective of being a leading expert on pain management for Oregon and the mid-Willamette Valley?**

I'm worried that recent changes to Oregon law may substantially affect addiction problems. In November of 2020, voters passed Measure 110. The measure decriminalized the possession of "personal use amounts" of hard drugs including heroin, methamphetamine, LSD and oxycodone. Rather than facing possible jail time, those in possession of hard drugs could opt to pay a \$100 fine or receive treatment.

**So you see problems on the horizon?**

I see them now. Unfortunately, our treatment community tells me that folks who are cited for possession are ignoring the fine and avoiding referrals to treatment. In 2020 unintentional opioid overdose deaths in Oregon were essentially double those of 2019. This has lead me to seek the support of the Salem Health Foundations for new work. The social isolation related to the pandemic has accelerated our nations overdose epidemic. In 2020 nearly 100,000 Americans lost their lives to overdoses. We need strong data collection and analysis to inform future policy so that we can stem this terrible tide.



**Where should our efforts be going at this time?**

My co-principal investigator, the foundation and I hope that we can shine a light on the risks associated with illicit fentanyl and help inform intelligent policy changes post Measure 110.

**Going forward, tell us what you want to do with the foundation’s support?**

The Foundation received a grant from the Office of National Drug Control Policy’s (ONDCP) Oregon-Idaho High Intensity Drug Trafficking Area (HIDTA) program. So me and my co-PI, Dr. Mark Stewart, who directs Willamette University’s Center for Quantitative Understanding of Analysis and Design, will target the potential inverse relationship between drug seizure quantities and emergency department nonfatal overdose case rates.

**What will the work do?**

The project will produce a dashboard resource that tracks the number of nonfatal overdoses in the region and, ultimately, throughout Oregon, and compare them to changes in the quantities of drugs seized. We anticipate this information will help forecast effects on emergency room visits as a function of upstream seizure rates.

I am very excited by the focus and thrust of this particular project. This Foundation work bridges health care and academe in our region in important ways that have been absent between Salem Health and Willamette University. All to benefit the mid-Willamette Valley.

**Why should this matter to the mid-Willamette Valley residents?**

Synthetic opioids like Fentanyl are significantly more potent. Fentanyl, for example, is around 80 to 100 time stronger than morphine. Many overdoses result from illegal drug manufactures mixing fentanyl into “fake” prescription pills and into non-opioid street drugs like cocaine, heroin or methamphetamine. Based on research conducted by the Drug Enforcement Agency, 42% of pills tested contained at least 2 mg of fentanyl; a potentially lethal dose. One kilogram of fentanyl could potentially kill 500,000 people. Drug threats facing the state of Oregon are a community health problem.

*The Salem Health Foundation is proud to support the work of Dr. Coelho. Dr. Coelho and his work truly embodies the foundation efforts to create and sustain healthier communities.*

# A tradition of service



## An interview with Salem Health Foundation board chair Alex Casebeer

**Alex, when you look back over the course of the pandemic, how did you see the foundation’s impact?**

What a great year and a half to look back on as chair for the foundation

board of directors! I know I speak for the entire board when I say we are proud of our organization’s impact on the community during the past 18 months. The work would not have been possible without the generous support of community members who help us fund these efforts. Our board knows that our best work is making an effort to put into action your passion to ensure that we have local, quality health care.

**What areas of impact mattered most to you?**

Among the accomplishments we are most proud of is how the foundation helped so many of our most vulnerable community members. We made impact with flu vaccination clinics, we provided resilience program support to frontline caregivers, and we awarded over \$120,000 in scholarships to local area students pursuing a medical-related degree. Our entire portfolio of work ensures our community has high quality health care support, today and into the future.

**What differentiates the mission of the foundation from others?**

Together, Salem Health Hospitals and Clinics and the Salem Health Foundation have guided the interests

of community members who feel a personal stake in improving the health and well-being of all of us who live and work in the mid-Willamette Valley. The foundation is the inspiration of generations of leaders past who knew that local health care was better when you added community service and local stewardship to the ethic and action of care.

**You mentioned generations of leaders. Can you tell us a little about some of those currently serving with ties to the past?**

Some local families have engaged consistently in service over the past five decades, with some still involved today. Ken Sherman Jr. has served 33 years as a Salem Health trustee, after his father, Ken Sherman Sr., served 30 years as a member of the Memorial Hospital/Salem Hospital boards. Alex Rhoten, who is in his sixth year with the foundation, and is our current foundation board vice-chair, has followed in the footsteps of his grandfather, George Rhoten. George was a founding member of the foundation’s board until he retired after twenty years of service in 1988.

I am from a family who were champions for the hospital through volunteer leadership. My grandfather, Les Green, served as a Trustee for several decades and most notably was the Trustee chair during a pivotal point in our community’s history, when Salem General and Salem Memorial hospitals merged in 1969 to form Salem Hospital.



Is this family legacy a reason why you serve on the foundation board?

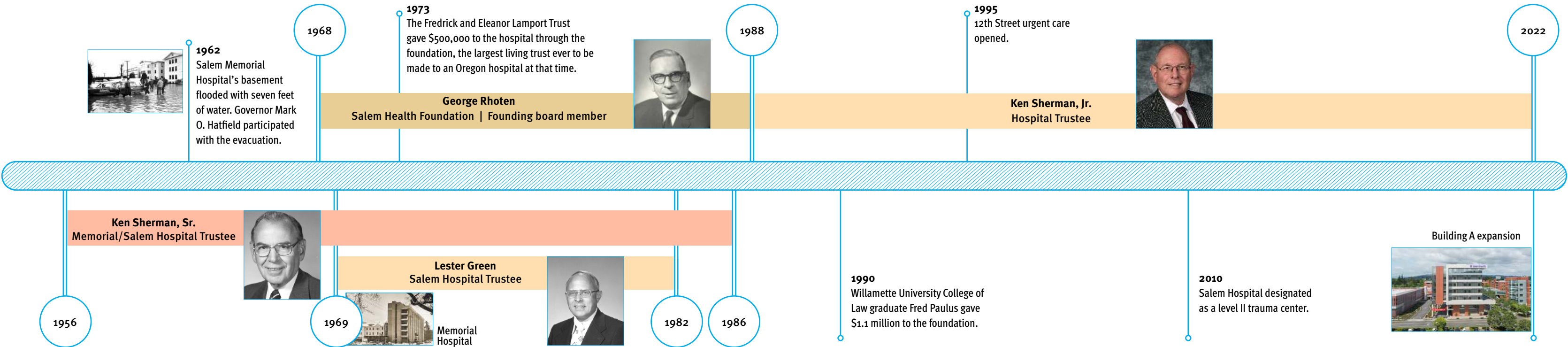
I serve because my grandfather made an example of putting your best effort into giving back to the community. I serve because I want to do my part to ensure that the work and role that both Salem Health and the Salem Health Foundation play in providing health care and support for an area of 500,000 people is done with attention to local resident’s needs.

Your grandfather passed away this past summer. What impact did his service make on you?

One of Lester’s life principles was to be a good steward — both through his business and mostly through his service to the community. I feel the exact same way and have tried to emulate him in many ways. Serving on this Board is certainly one of those ways. I hope to have this same impression on my children! I look forward to seeing future generations of families carrying on this tradition of service and we absolutely can’t do it without community help and support. Passion and support are definitely the catalyst for helping our communities be stable, livable and enjoyable to years to come.



Les Green with Grandson's Alex and Matthew Casebeer.



# Thank you to our donors

Recognizing the philanthropic commitment made by the following individuals, businesses, foundations and organizations that have provided support to the Salem Health Foundations from Jan. 1, 2021 through Dec. 31, 2021.

## CHAIR’S SOCIETY

### \$25,000 and above

William Bales  
Baruah Family Trust  
Capitol Auto Group  
Cherriots  
Compton Family Foundation  
Bill and Judy Meier  
Power Auto Group, Fleet and Commercial Sales  
Skyline Ford  
State of Oregon - Department of Human Services  
Alix and Michael Truax

### \$10,000 - \$24,999

Creekside Golf Club Women’s Golf Association  
Douglas B. and Sheryl W. Dawson  
Lorraine N. Ellis Trust  
Marion County Department of Health and Human Services  
Martha J. Wertz Living Trust  
Cheryl Nester-Wolfe and Jerry Wolfe  
OCCU Foundation  
Dr. Robert and Lori Ponec

Scott Edwards Architecture  
Turner Construction Company  
David and Lora Withnell  
Withnell Motor Company

### \$5,000 - \$9,999

Alliant Systems  
Adele Allison  
BMW of Salem  
Bratzel-Kremen Foundation  
Dallas High School and Dallas High School Girl’s Volleyball Team  
Kathy and Steve Gordon  
Hope Orthopedics of Oregon  
Gary and Sue Kaufman  
The Linda L. Vladyka Breast Wellness Foundation  
Jessie McCandlish  
Nissan of Salem  
Oregon Oncology Specialists (Salem)  
Dr. Bud C. Pierce  
Roberson Motors Inc.  
Shawn and Vicki Ryan  
Salem Foundation  
Edwin and Rita Sather  
Lorraine Vickery  
Dr. Anda Yangson and Michael Walker

## LAMPORT SOCIETY

### \$1000 - \$4999

Chip and Lorissa Addabbo  
Edward Anderson  
Andiamo Consulting  
Arctic Sheet Metal  
Richard P. Ashcroft  
Margaret Bagley  
Jim and Lonna Bauer  
Keith and Madge Bauer  
John and Anne Bauer  
Dr. Howard and Jean Baumann  
Alan and Sharlen Bennett  
Shilo Biegel  
Kelly Blanco  
Dr. Matthew and Kimberly Boles  
Bollman Funeral Home  
Ordena Bond  
Brighthouse Life Insurance Company  
Terry and Jo Ann Bucher  
Dr. Amy M. Card  
Michael L. Carney  
Dr. Chris Carpenter  
Alex and Ashley Casebeer  
CD Redding Construction, Inc.  
Zennia and Eduardo Ceniza

Center Pointe Signs  
Cherry City Electric  
Drs. Christine and G. Andrew Clarke  
Malinda Close  
Coldwell Banker Commercial Mountain West Real Estate  
Dr. Mauricio and Debra Collada  
Mike and Jane Compton  
Pamela and Arturo Cortez  
Katherine and Ben Dobler  
Dr. Mark Dolan and Jacqueline Heavey  
Dr. Timothy and Ashley Duenas  
Dynalectric Company  
Fidelity Charitable Gift Fund  
Eric and Holly Fiskum  
Jennifer Fowler  
Josh and Ashley Franke  
Fran Franklin  
Fraternal Order of Eagles Ladies Auxiliary Aerie 2081  
Barbara and Bob Furer  
Garrett Hemann Robertson, P.C.  
Pete and Shirlene Gonzalez  
Mary and Terry Gregory  
Kathleen Haak  
Dana Hawkes  
Honda of Salem

Sarah and Casey Horn  
IS Living, Inc.  
J&S Masonry, Inc.  
Jani-King  
K&E Excavating, Inc.  
Katherine Keene and Jack Munro  
Dr. Lazení and Rachel Koulibali  
Cyndi Leinassar  
Amy Lowery and Mike Bollman  
Ann Lyman  
Mark and Kim Lyman  
MacDonald-Miller Facility Solutions (MacMiller)  
Norm and Chris Manselle  
Karen E. Mednick  
Meduri Farms  
Leah Mitchell and Joe Dafoe  
Colleen Mohr  
Henry Mukhuna  
Kristen and Rick Myers  
Jaime Nichols  
ODP Solutions, Inc.  
Olsen Design and Development  
Dr. Mark and Marianne Olson  
PAE Engineers  
Pence Construction  
Pioneer Trust Bank Foundation  
PKA Architects  
Portland General Electric Co.  
Ken Provencher and Dr. Karen Hooker  
Mitch and Kelleigh Ratzlaff  
Drs. Nancy Reyes-Molyneux and Terry Molyneux  
Alex and Kirstin Rhoten

Elisabeth Rodman  
Gayle Rodriguez  
Becky Ruppert  
Frieda Ryan-Anzur  
Salem Emergency Physicians Service, P.C.  
Salem Health Community Relations  
Brandon and Stacey Schmidgall  
Jason Schulze  
Schwab Charitable Fund  
Micheal K. Seraphin  
Ken and Betsy Sherman  
Lane and Francine Shetterly  
Jon Shipley  
Darin and Lisa Silbernagel  
Carlos and Vickie Simpson  
Lauren Smith  
Carla and Michael Soukup  
Kerrie Spicer  
Jeanne St. Pierre and David Haber  
State Farm Insurance (Dallas)  
Stephen R. Altman Inc.  
Dr. John A. and Ann Stevens  
Deborah and Brian Sund  
Nikki Thomas  
TIAA-CREF Life Insurance Company  
Mary and Greg Tibbot  
Michelle Tobias  
Thrivent (Willamette Associates)  
Brenda Umulap  
US Bank (Salem)  
Valley Credit Union  
Maria VanDerHeyden

Gladys Vasquez Ramirez  
Volkswagen of Salem  
Dr. Lee and Julie Swendiman Vrana  
Cindy and Paul Wagner  
Dr. Hans and Kathleen West  
Dr. Ted and Eileen Williamson  
Dr. Ralph A Yates

## MORSE SOCIETY

### \$500 - \$999

JoAnn Aldrich  
Douglas Aljets  
Dawn Allen  
Dr. Carrie Allison  
Craig and Pat Anderson  
Jennifer and Steve Atkinson  
Clennin and Kathleen Baker



## OPENING JULY 2022

### FAMILIES MATTER PROJECT

*Creating inclusive respite and reflection spaces for all members of our community*



### Salem Health<sup>®</sup> Foundation

To learn more about this 3.7 million project visit [www.salemhealthfoundation.org/families-matter-project](http://www.salemhealthfoundation.org/families-matter-project)



Nancy and Brian Baldwin	Ellen and Rick Hampton	Shyla McDade
David Barlow and Shannan Murphy-Barlow	William Hansen and Betty McDonald	Trudy McKinnell
Rachel Barnes	John and Mary Hawkins	Justin and Kelsey Millar
Scott Beckmann	Hometown Postal	Anna Miller
Kiernan Bishop	Irina and Thomas Hyde	Julie Mohr
Melissa Bradley	Jessica Johnson	Harvey and Elizabeth Mohrenweiser
Jennifer and Tony Broadus	Herbert and Linda Jolliff	Morgan Stanley
Marge Buchheit	Tasha Kiger	Jill and Kelly Munger
Dr. Robert and Karen Buza	Virginia and Cleve Knabe	Sara Nash
Liz and Gregory Colwell	Robin and David Large	Veronica Nunez
Dr. Robert Cooper	Rick S. Lenhardt	Oregon State Credit Union (Dallas)
Dallas Grocery Outlet	Marlaine and Warren Magee	Julie Pinkerton
Bonnie and Joe Driggers	Rainy Marcum	Amy Rau
Dr. Matthew C. Egalka	Marion-Polk Medical Society	Susan Redmond
Anne Fairchild	Marquis Spas	Pamela Reznicek
Kathy Fleck	Renee and Marshall Martizia-Rash	Teri Rush
Paul Gehlar	Teresa McCarrell	Mary Salinas
Doris Haag-Cupp		

Mary E. Secor  
Sherman, Sherman, Johnnie and Hoyt, LLP  
Lane and Lucy Shipley  
Tonja Siefarth  
Jesse Silvkoff  
Leilani and Dr. Doug Slama  
Kenny Smittle  
Chris and Adam Stewart  
Amy Stokes  
Matthew Tanner  
Kelly Ward  
Amy Ward  
Misti and Greg Shilhanek White  
Jessica and Jeremy Williams  
Jennifer Winslow

WEDEL SOCIETY

\$250 - \$499

Andrew Alman  
Rebekah Alvey  
Gloria M Andersen  
Arthur and Amanda Apodaca  
Phillip Armstrong  
Pam E. Arnold  
Loretta Asa  
Phom Ashford  
Barbara Ashwill  
Mari and Chris Bailey  
Laureen and Keith Baldwin  
Hannah Bauer  
Jennifer Beaman  
Melissa and Scott Berry  
Elisa and Greg Bledsoe

Denyc Boles  
Christina Booth  
Sabrina M. Borup  
Carol Brown  
Doug Bruce  
Yturri Camara  
Denise Campbell  
Kevin and Telacia Carlston  
Gina Cave-Mersch  
Rashed Ceniza  
Diane J. Chain  
Todd Chandler  
Darroll Chowning  
Barbara and Lance Clark  
Tiela Clark  
Geraldine Comerford  
Rebecca Cool  
Julie Cox  
Rachel Croeni

Laura DiDomenico  
Nancy Dunn  
Jeanette Edel  
Coleen Elser  
Dawn Finberg  
Nathan Fitzpatrick  
Jim Fox  
George and Laura Kreitzberg Foundation  
Ed and Linda Green  
Michelle Grove  
Sally Hales  
Kristi and Don Harmon  
Theresa and Bill Haskins  
Haugen’s Galleri Portrait Studio  
Miranda Hennan  
Kristan Hoke  
Ebony Holly  
Stacy and Rich Holsapple

Christy Hooper  
Wendi Jeffreys  
Catherine A. Jensen  
Sandi E Johnson  
Deona J. Kasten-Stubbs  
Lisa and Bernard Ketchum  
Catherine King  
Joyce Kintz  
Pauline Klemin  
Kay Knott  
Lisa Koontz  
Arielle Le Veaux  
Brandy Lenhart  
Chris Lentz  
Kristen Lorenz  
Kelsey Madsen  
Bill and Mary Mainwaring  
Malissa Manning  
Jordan L. Martin

Josephine D. Maxwell  
Meadowlawn Women’s Golf Club  
Barbara Merrifield  
Lisa Mertz  
Cathy Michaelson  
Alireza Moghaddampour  
Patti Moore  
Lea Ann Morrow  
Sharon Moss  
Debra A. Motte  
Andrea and Johnny Moya  
Shawn and Richard Muma  
Michael Newton  
Kathryn Nielsen  
North Marion Recycling and Disposal  
Svetlana Novakovskaya  
Oregon Refuse and Recycling Association

“Being able to give back to people who are taking that same path (I took)... and to know that money is helping them fulfill their dreams it’s a good feeling. It is a good feeling that not only did I get that money, but I am giving back so others get that chance.”

Tia received scholarship assistance from the foundations and now is a donor - who is giving back so that others can have the same opportunities.

Tia R., West Valley Hospital surgical services clinical nurse (with daughter, Madison)



Upgraded medical technology

West Valley Hospital nurse anesthetist Todd Hixon guides the foundation-funded ultrasound machine to place a nerve block in a patient. Nerve blocks are a tool that provides pain relief and significantly improves recovery. The Salem Health Foundations serves patients across Polk County by funding upgrades and improvements just like this one.



Stephan Owens  
Lonnie Owens-Wink  
James Parr  
Holly and Tyler Payne  
Neil Peterson  
Heather Pfrehm  
Heather Phelps  
Nancy Pifer  
Gary and Linda Pope  
Shannon Priem  
Leshaya Pugh  
Heidi D Ramp-Rogers  
Angela J. Ray  
Reed Catering LLC  
Karen and Allen Remington

Scott Reynolds  
Laurice Riddell  
Michelle Roberts  
Felicia A. Rosenberg  
Gary Russell  
Jennifer Santa Maria  
Miranda Schotthoefer  
Jack Schwarte  
Nick Scott  
Dr. Dan and Karen Sewell  
The Shabby Shed  
Amber Shambaugh  
Angela Smith  
Leticia Smith  
Stephen Smith

David and Joy Sowle  
Deanna Stein  
Sunnyview Acres  
Reid and Maggie Sund  
Angela Sutton  
Donna Thomas  
Melodie Tooley  
Amy and Isaiah Ursprung  
Sheila Vandegraaf  
Jared Virtue  
Andrew Walker  
Bahaa and Ruth Wanly  
Sarah Watkins  
Samson Yang

**CENTURY SOCIETY**  
  
**\$100 - \$249**  
Seth Adams  
Sheri L. Aguilar  
Johnny and Myrna Alexander  
Emily Allred  
Nancy and Daniel Alt  
Sylvia Alva  
Dr. Philip W. Anderson  
Anders Andersson  
Katie Bach  
Kara Bacon  
Phyllis M. Baker  
Andrea Bartelson

Jeanne and Lee Bartkowski  
Andrea Bell  
Jennifer Bellinger  
Lew Ann Bergen  
Darlene Beyerle  
Bruce and Monna Bigler  
Angie Bishop  
Linda M. Bishop  
The Blackbaud Giving Fund  
Byron L. Blagburn  
Brooke Blanchard  
Stacy Bliss  
Jack L. Boos  
Phyllis L. Bowden  
Linda Bowman  
Kacy L. Bradshaw

Lisa Brattin  
Denice Briles  
Lisa Brock  
Dr. Richard and Margaret Brust  
Melissa Buckley  
Yvonne Burdick  
Brenda Burnett  
Cheryl A. Burr  
Julie J Burton  
Jeanne Buswell  
Russell Campbell  
Linda Cannon  
Jonathan T. Carder and  
Monique Baillargeon  
Dr. Thomas and Jacqueline Carey

James and Nancy Cash  
Deborah L. Castro  
Sara Chain  
Elton H. Chang  
Stephen and Marcia Chapter  
Ray and Doris Clark  
Heidi Classen  
Toi Clemetson  
Jennifer M. Columbus and  
Alex Paraskevas  
Megan Corrado  
Jennifer Cotton  
Lee Cowan  
Molly Culp  
Amy Cummings

Ed Davis Jr.  
Sarah Dawson  
Elizabeth Degerstedt  
Katelyn Delaughter  
Tiffany and Jon Duell  
Joseph Duffy  
George and Gladus Dwire  
Tara Edick  
Stanley and Therese Emmert  
Cassie Enderle  
Paul and Roxanne Evans  
Marianne Fairchild  
Ted Fennimore Jr.  
Sharon Fetterley  
Mae and Kenneth Finberg

Change of plans doesn't stop  
Pink Out event

This past fall, students from Dallas High School did not let the pandemic get in their way of raising funds for cancer prevention. They once again hosted their annual Pink Out Volleyball fundraising tournament to provide resources for Women's Breast Cancer screenings.

The entire event raised an impressive \$4,200. These students faced the challenges of navigating COVID-19 guidelines head-on and hosted a successful fundraising event. The Foundation appreciates our partners like the students at Dallas High School, who help provide resources to our community's most vulnerable patients.



Making FETCH happen: Caring for  
hospitalized patients' pets

The FETCH program is a network of volunteers who provide extraordinary support to patients. FETCH partners with Salem Health's care managers to identify hospitalized patients who have a beloved animal at home and are without resources to find temporary care for these pets.

This program provides a sense of relief to ill patients that their pets will be cared for, which then encourages them to remain in the hospital and receive the necessary treatment they need to get well. Volunteers provide boarding, with the Willamette Humane Society acting as a partner to assist when the numbers of pets exceed the capacity of volunteers. Since the program's inception in 2013, over 108 dogs and 75 cats have been cared for at no cost to patients. The Salem Health Foundation provides funds to help cover the costs of pet food, veterinary care and boarding services for those animals unable to be fostered by volunteers.





Dianne Finn

Janice Fisher

David and Nancy Fiskum

Rob N. Foster

D.L. and Patricia Frahm

Valorie Freeman

Erin T. Frenzel

Andrew Frey

Robert Geer

Linda Gerig

Dawn and Ben Gille

Laura Gilmore Strachan

Anastacia Goktas

Benjamin Gonzalez

Helene Gough

Danielle Graffenberger

Wesley Grant

Larry and Sharon Gray

James T. Greenwell

Chris Griffiths

Judith Grober

David and Norma Guile

Lauren Gutierrez

Kevin and Shari Gwyn

Chris Haag

Laurie and Gordon Hain

David Hamilton

Marcine Hancock

Donna Harris

Katharine Hasselman

Becky Herber

Brian Herrin

Loren Heryford

Robert G Hill

Vilaiphone Hillyer

Julie and Christopher Hinson

James Hird

Bill Hubble

Sheila Huff

Alicia Hussey

Jim and Kerstin Ilg

Marcelo and Kristi Jacobo

Linda James

Janet Jennings

Beth A. Jespersen

Kathleen Jones Anthony

Jeff S Josifek

Jennifer A. Jurisich

Dr. Robert and Ann Kelly

Christine Kidd

Lisa King

Patrick Kiselicka

Chris Kraemer

Karen Kruger

Cheryl LaBronte

Stephanie and Ken Lairson

Serena and Kevin Lairson

Bruce Landrey

Mark Larsen

Liz A. Larson

Kimberly and Philip Lemman

Carol and Ronald Lewis

William Little and Lisa Tollenaar

Kellie Liudahl

Fahlene Lockwood

Charlette Lumby

Kevin and Susanna Mannix

Kim Marckx

Ed and Dawn Marges

Louise and Larry Martin

Kathy Martin

Amy Martin

Bryn Martinez

Melina Martinez

Tresa McArthur

Brooke McCann

James McCarty

Angela McDougal

David and Nancy McKinnon

Carrie McLaughlin

Bruce McLean

Kimberly McQuade

Susannah Metzger

Lu Ann and John Meyer

Bertie and Ronald Miller

Elizabeth Mills

Pat Mohr

Lindy Mongenel

Cathy A. Monroe

Glen Morrison

Scott Myers

Harry and Jane Nakaue

Michael Nason

Ann Nathan

Cindy and Eugene Neth

Meghan Newstone

Patricia and Richard Newton

Jennifer Nightingale

Renee Nygaard-Dershem

Beth Ann Nyssen

Gary O'Brien

Susan Olson

Oregon Oncology Specialists

Andrea Ortiz

Dr. Donald and Elizabeth Orwick

Kenneth Palke

Julie A. Palmer

Darrel Palmer

Shannon Parker

Nora and Kevin Parnell

Sherry L. Patterson

Steve and Christine Paysinger

Nathan Payton

Dana Pearson

Robert Peschka

Bryce C. Petersen

Rashae L. Peterson

Ruth Peterson

Dana and Dan Petre-Miller

Jennifer Phillips

Lorene Phillips

Norine and Gene Pierson

Richard and Debra Pine

Angela and Warren Potter

Melissa Potts

Michael and Trythena Pryor

Susan Putnam-Hopkins

William and Jean Quinn

Leonard Ramsey

Mary Ellen Ramseyer

Cheryl Randall

Nancy Rasmussen

Irene and John Rector

Dalene Reed

Kelly Remington

Rickreall Farm Supply

Heather and Daniel Rideout

Michelle Riley

Tia Rodriguez

Teresa Rodriguez

Terri and Scott Roth

Jamie Rouse

Rose Rush

Stephen W. Ryan

Amanda J Sanchez

Gay Schierholz

Deborah Schleufer

Dustin Schull

Helene Searcy

Phil and Julie Segura

Melinda Seibert

Dr. Scott Sewell and  
Melissa Williams

Dr. Dan G. Sewell and  
Susie Callahan Sewell

Donna A. Shamblin

Gina and Anthony Sheffield

Pamela Short

Rebecca Silbernagel

Marion and Kenneth Skog

Dr. James and Carol Slama

Janice Sorensen

JoAnne Spink

Karlene Sprayberry

Barbara Steinberg

Betsy Steinberg

Dawnie R. Stephenson

Leah Stephenson

Cheryl Stewart

Cheryl Stoenner

Dr. John M Strother and  
Stephanie Koski

Tammy Swigger

Amanda L. Swinehart

Anna Temme

Melissa Tescher

Think Partners

Jennifer Tiger

Arlene To

Kara Toma

Kathy Tompkins

Catherine Traeger

Megan Trine

Michelle Trumbly

Carey E. Uhlenkott

Nancy Unck

United Way of the  
Mid-Willamette Valley

Mary and A.J. Vandecoevering

Carlos Velasco

Maria Villa

Sara Wagnier

Shelley Weise

Kimberly Wiebenga

Rebecca Wilson

Renee Wilson

Dana Wolf

Sarah Wolfe

Michelle M. Wonderling

Desiree Wood

Neal Wright

Caroline E. Wyllie

Sue Xiong

Dr. E. Stephen Yao

Hilary Zehr



Creekside Women’s Golf Association raised \$15,500 from their 20th annual Play for the Cure golf tournament. Pictured: Danny Moore, Ryan Woodward, Roxie Gregory, Eva Corbin, Jill Munger, Carla Bolme, Maureen Smith, Ellen Vaterlaus and Marilyn Hedal.

1896

Society Giving Legacies

In honor of the year Salem Hospital opened its doors to the community, the 1896 Society was created to recognize the commitment of individuals who made planned gifts to the Salem Health Foundation or West Valley Health Foundation, regardless of the amount. These individuals are true Philanthropists who demonstrate passion and care for others by leaving the foundations with a legacy of support.

We are immensely grateful to the following donors who strongly believed in our mission-driven work and chose to include the foundation as a benefactor in their estate planning.

Lorraine N. Ellis – via the Lorraine N. Ellis Trust

Martha J. Wertz – via the Martha J. Wertz Living Trust

If you have already made provisions that would qualify you to be a member of the 1896 Society, please get in touch with the foundation staff so that we may properly thank you for your generosity and commitment to the health of our community.

Call 503-814-1990 or email: [foundation@salemhealth.org](mailto:foundation@salemhealth.org)



# Offering care to our providers

As the pandemic has continued to impact our community for these past two years, it has placed enormous strain on our courageous frontline staff, who selflessly care day in and out for our most ill and vulnerable community members. The foundation is grateful to our donors who designated their giving to the Caregiver Resiliency Fund this past year. That generosity supported the following programs and initiatives:

- A part-time Resiliency Chaplain Advocate to support our emergency department team

- Scholarships for CNA and RN staff to pursue continuing education and professional development opportunities
- Training and certification review courses
- Tokens of appreciation with meals, treats, coffee cards, and gift cards to local businesses
- Special therapy pet sessions

These resiliency efforts helped our health care providers feel renewed, refreshed and appreciated. Thank you.



# A healthy future in Polk County



An interview with West Valley Foundation chair Darin Silbernagel

**In what ways has the foundation’s work in the west valley region changed over the last year?**

It is easiest to see that we’ve widened our reach! The foundations came alongside the Salem Health mobile vaccine folks to get vaccinations deeper into the cultural communities. We aided their getting vaccines to parks, into churches, even directly at workplaces and farms.

**What issues related to health did the Board engage in?**

The board shares community interests regarding improving access and availability to primary care. For Polk County residents, we found that language barriers can affect Spanish speakers’ access to care resources. One of our board members is leading efforts to understand the deficiencies of access to care in Falls City.

**What work did you do for West Valley Hospital?**

We did some good work assisting the West Valley Hospital. They needed a new piece of equipment that will improve the patient experience and the quality of care. Through the generosity of community support the foundation was able to raise the money required to purchase the piece.

**How did you respond to the issues?**

We did new work this year. With partners, we developed and distributed language-specific posters, encouraging COVID vaccination, flu shots and testing. We partnered with the CCO PacificSource and Polk County Health. We partnered Polk County Free Clinics to get shots into arms. We created and ran radio and TV ads on Spanish-speaking media, with the intention to better communicate the availability of health resources. We have been actively engaged in community health fairs in Falls City, and we have a group formed with Amy Houghtaling from the West Valley Foundation, Salem Health representatives. PacificSource representatives, the Falls City mayor and city manager and Polk County Commissioner Jeremy Gordon to explore better access to primary care for Falls City Residents.

**What do you see ahead for the foundation’s work in the west valley region?**

We will soon be seeing some new doctors, nurse practitioners and physician assistants! We are excited for residents to see new care professionals coming our way. We seek to better understand how Polk County is growing and changing. We will be learning more about the needs of Falls City, Grand Ronde, Western Oregon University, regional public transportation and county resources. You will see us working with more with additional partners to do more. We plan to seek out more people who share our view that Polk County is the best place to live and to thrive in Oregon! We believe our best living will rely on improving and delivering local, highest quality health care. We look forward to working closely with community members to be their voice and advocates.